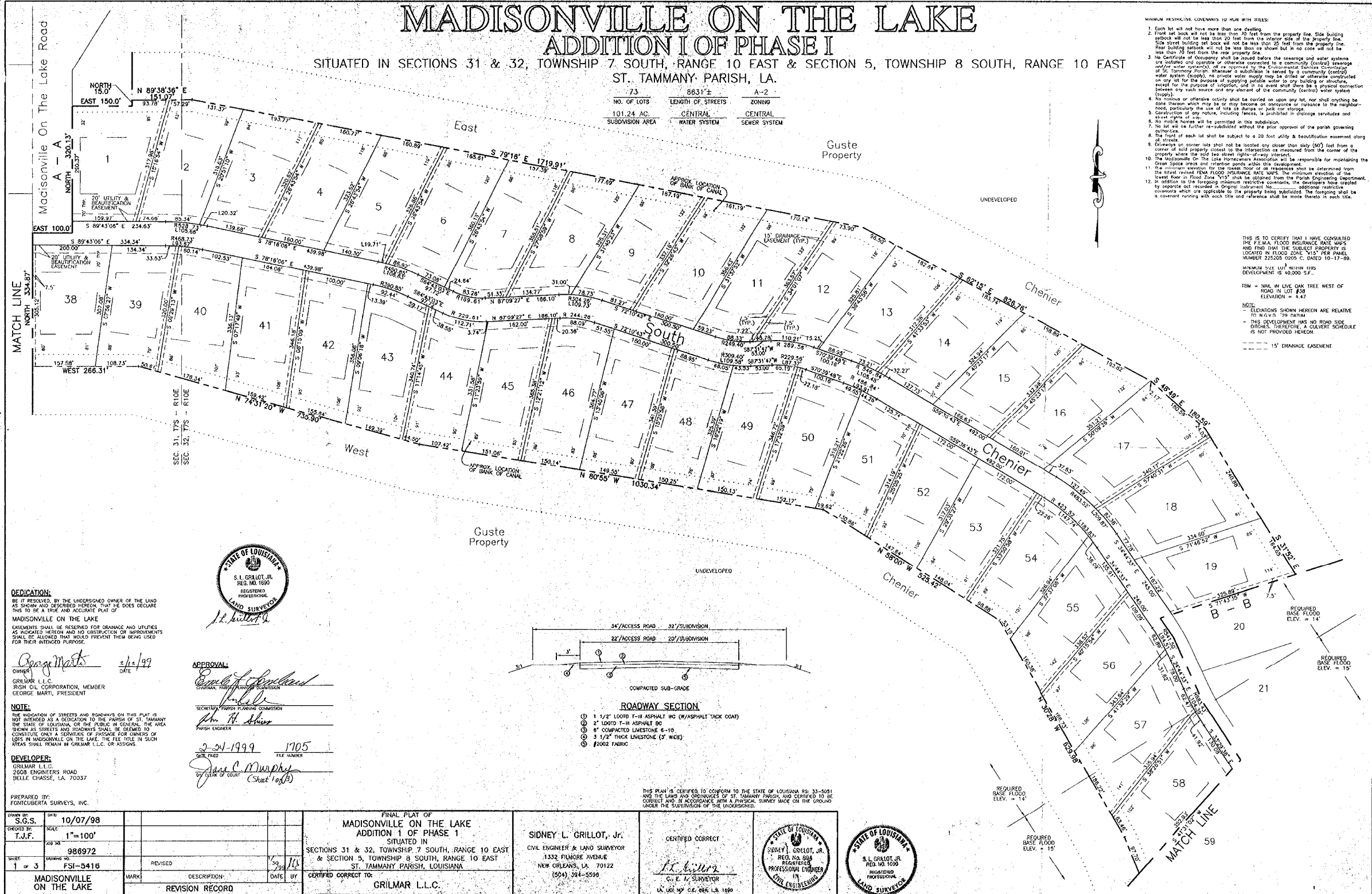


MADISONVILLE ON THE LAKE ADDITION I OF PHASE I

SITUATED IN SECTIONS 31 & 32, TOWNSHIP 7 SOUTH, RANGE 10 EAST & SECTION 5, TOWNSHIP 8 SOUTH, RANGE 10 EAST
ST. TAMMANY PARISH, LA.

| | | |
|------------------|-------------------|--------------|
| 73 | 8631'± | A-2 |
| NO. OF LOTS | LENGTH OF STREETS | ZONING |
| 101.24 AC. | CENTRAL | CENTRAL |
| SUBDIVISION AREA | WATER SYSTEM | SEWER SYSTEM |

- MINIMUM RESTRICTIVE COVENANTS TO RUN WITH TITLES:
- Each lot will not have more than one dwelling.
 - Front set back will not be less than 20 feet from the property line. Side building setback will not be less than 20 feet from the exterior side of the property line. Side street building set back will not be less than 20 feet from the property line. Rear building setbacks will not be less than as shown but in no case will not be less than 70 feet from the rear property line.
 - No Certificate of Occupancy shall be issued before the sewerage and water systems are installed and approved or otherwise connected to a community (central) sewerage or water system(s), all as approved by the Environmental Services Committee of St. Tammany Parish (wherever a subdivision is served by a community (central) water system (sewer)), no private water supply may be drilled or otherwise constructed on any lot for the purpose of supplying potable water to any building or structure, except for the purpose of irrigation, and in no event shall there be a physical connection between any such source and any element of the community (central) water system (sewer).
 - No noxious or offensive activity shall be carried on upon any lot, nor shall anything be done thereon which may be or may become an annoyance or nuisance to the neighborhood, particularly the use of lots as dumps or junk car storage.
 - Construction of any nature, including fences, is prohibited in drainage servitudes and street rights-of-way.
 - No mobile homes will be permitted in this subdivision.
 - No lot will be further re-subdivided without the prior approval of the parish governing authority.
 - The front of each lot shall be subject to a 20 foot utility & beautification easement along all streets.
 - Driveways on corner lots shall not be located any closer than sixty (60) feet from a corner of said property closest to the intersection or measured from the corner of the property where the said two street rights-of-way intersect.
 - The Madisonville On the Lake Homeowners Association will be responsible for maintaining the Green Space areas and retention ponds within this development.
 - The minimum elevation for the second floor of all residences shall be determined from the latest revised FEMA FLOOD INSURANCE RATE MAPS. The minimum elevation of the second floor on Flood Zone "V1" shall be obtained from the Parish Engineering Department.
 - In addition to the foregoing minimum restrictive covenants, the developers have created by separate act recorded in Original Instrument No. _____ additional restrictive covenants which are applicable to the property being subdivided. The foregoing shall be a covenant running with each title and reference shall be made thereto in each title.



THIS IS TO CERTIFY THAT I HAVE CONSULTED THE FEMA FLOOD INSURANCE RATE MAPS AND FIND THAT THE SUBJECT PROPERTY IS LOCATED IN FLOOD ZONE "V1" PER PANEL NUMBER 22525 0205 C, DATED 10-17-99.

MINIMUM SIZE LOT WITH THIS DEVELOPMENT IS 40,000 S.F.
TBM = NAIL IN LIVE OAK TREE WEST OF ROAD IN LOT #38
ELEVATION = 4.47

NOTE:
- ELEVATIONS SHOWN HEREON ARE RELATIVE TO N.O.D. 29 DATUM
- THIS DEVELOPMENT HAS NO ROAD SIDE DITCHES. THEREFORE, A DRAINAGE SCHEDULE IS NOT PROVIDED HEREON.
- 15' DRAINAGE EASEMENT

DEDICATION:
BE IT RESOLVED, BY THE UNDERSIGNED OWNER OF THE LAND AS SHOWN AND DESCRIBED HEREON, THAT HE DOES DECLARE THIS TO BE A TRUE AND ACCURATE PLAT OF MADISONVILLE ON THE LAKE. EASEMENTS SHALL BE RESERVED FOR DRAINAGE AND UTILITIES AS INDICATED HEREON AND NO OBSTRUCTION OR IMPROVEMENTS SHALL BE ALLOWED THAT WOULD PREVENT THEM BEING USED FOR THEIR INTENDED PURPOSE.



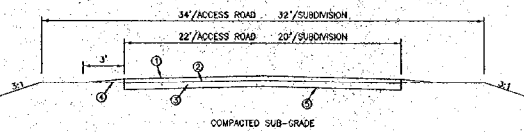
OWNER: *George Marti* DATE: 2/12/99
GRILMAR L.L.C.
IRISH OIL CORPORATION, MEMBER
GEORGE MARTI, PRESIDENT

APPROVAL:
[Signature]
CHAIRMAN, PARISH PLANNING COMMISSION
[Signature]
SECRETARY, PARISH PLANNING COMMISSION
PARISH ENGINEER

NOTE:
THE INDICATION OF STREETS AND ROADWAYS ON THIS PLAT IS NOT INTENDED AS A DEDICATION TO THE PARISH OF ST. TAMMANY THE STATE OF LOUISIANA, OR THE PUBLIC IN GENERAL. THE AREA SHOWN AS STREETS AND ROADWAYS SHALL BE DEEMED TO CONSTITUTE ONLY A SERVICE OF PASSAGE FOR OWNERS OF LOTS IN MADISONVILLE ON THE LAKE. THE FEEL TRAIL IN SUCH AREAS SHALL REMAIN IN GRILMAR L.L.C. OR ASSIGNS.

DEVELOPER:
GRILMAR L.L.C.
2808 ENGINEERS ROAD
BELLE CHASSE, LA. 70037

FILED: 2-24-1999 THE NUMBER: 1705
[Signature]
CLERK OF COURT (Sheet 1 of 2)



- ROADWAY SECTION**
- 1 1/2" LOOTD T-11 ASPHALT WC (W/ASPHALT TACK COAT)
 - 2" LOOTD T-11 ASPHALT BC
 - 6" COMPACTED LIVESTONE 6-10
 - 3 1/2" THICK LIVESTONE (3" WICK)
 - #2002 FABRIC

THIS PLAN IS CERTIFIED TO CONFORM TO THE STATE OF LOUISIANA RS: 33-5051 AND THE LAWS AND ORDINANCES OF ST. TAMMANY PARISH, AND CERTIFIED TO BE CORRECT AND IN ACCORDANCE WITH A PHYSICAL SURVEY MADE ON THE GROUND UNDER THE SUPERVISION OF THE UNDERSIGNED.

| | | | | | |
|--------------------------|----------------------|----------|-----------------|-------|-----|
| DRAWN BY: S.O.S. | DATE: 10/07/98 | | | | |
| DESIGNED BY: T.J.F. | SCALE: 1"=100' | | | | |
| SHEET: 1 of 3 | BOOK NO: 986972 | REVISED: | | | |
| | DRAWING NO: FSI-9416 | DATE: | | | |
| MADISONVILLE ON THE LAKE | | MARK: | DESCRIPTION: | DATE: | BY: |
| | | | REVISION RECORD | | |

FINAL PLAT OF
MADISONVILLE ON THE LAKE
ADDITION I OF PHASE I
SITUATED IN
SECTIONS 31 & 32, TOWNSHIP 7 SOUTH, RANGE 10 EAST
& SECTION 5, TOWNSHIP 8 SOUTH, RANGE 10 EAST
ST. TAMMANY PARISH, LOUISIANA

SIDNEY L. GRILLOT, Jr.
CIVIL ENGINEER & LAND SURVEYOR
1332 FILMORE AVENUE
NEW ORLEANS, LA. 70122
(504) 384-3596

CERTIFIED CORRECT
[Signature]
C. E. SURVEYOR
LA. REG. NO. C.E. 286, L.S. 1890

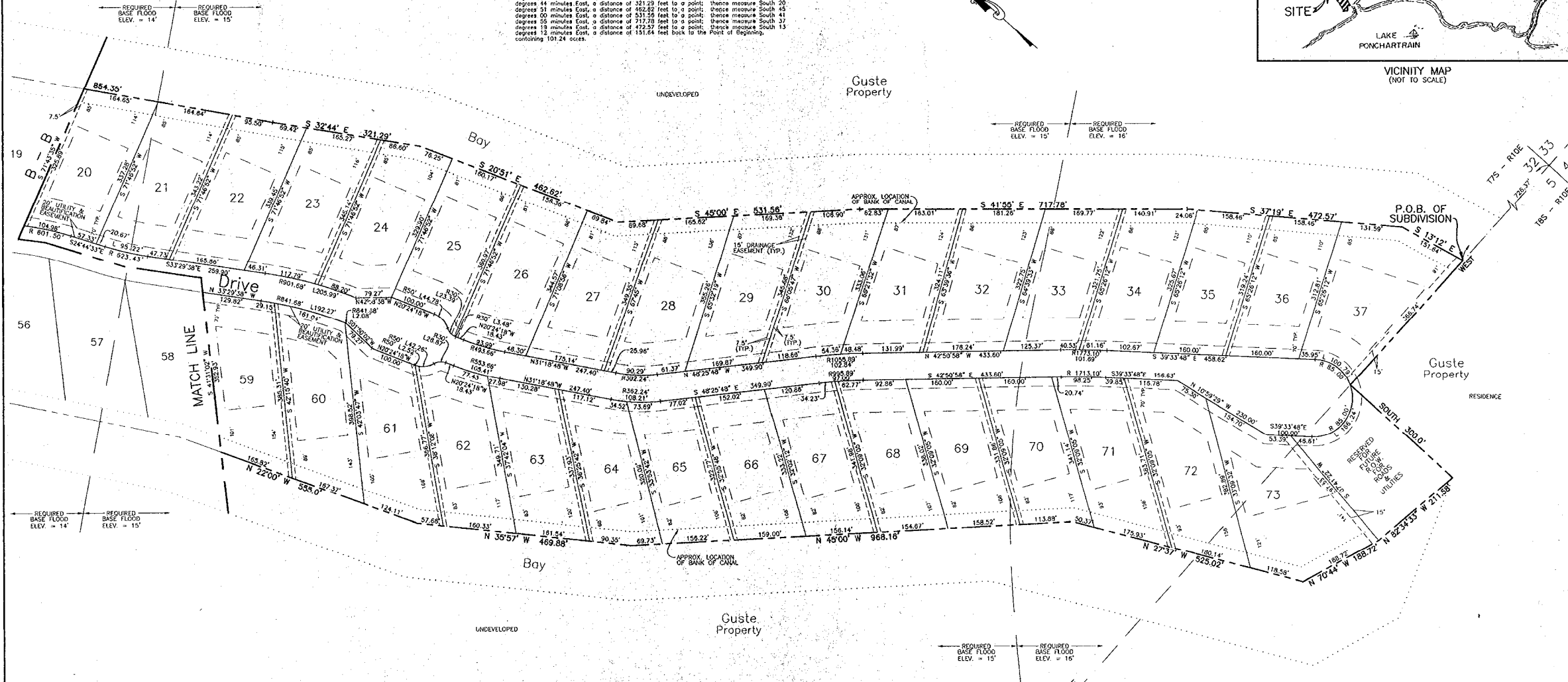
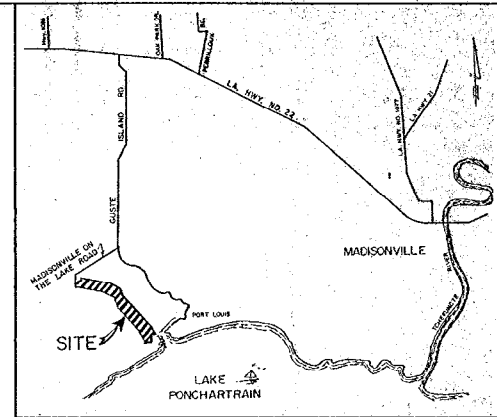


| | | | | | |
|--|--|--|--|--|--|
| PREPARED BY: FONTCUBERTA SURVEYS, INC. | | | | | |
| | | | | | |
| | | | | | |
| | | | | | |
| | | | | | |

LEGAL DESCRIPTION:
MADISONVILLE ON THE LAKE
ADDITION 1 OF PHASE 1

One Certain Parcel of Land Situated in Sections 31 and 32, Township 7 South, Range 10 East and Section 5, Township 8 South, Range 10 East, Parish of St. Tammany, State of Louisiana, and more fully described as follows:

Commencing at the Southeast Corner of Section 32, Township 7 South, Range 10 East; thence measure West, a distance of 728.17 feet to the POINT OF BEGINNING. From the Point of Beginning continue West, a distance of 585.74 feet to a point; thence measure South, a distance of 300.0 feet to a point; thence measure North 83 degrees 54 minutes 33 seconds West, a distance of 211.58 feet to a point; thence measure North 79 degrees 44 minutes West, a distance of 196.72 feet to a point; thence measure North 67 degrees 37 minutes West, a distance of 562.62 feet to a point; thence measure North 45 degrees 00 minutes West, a distance of 968.18 feet to a point; thence measure North 35 degrees 57 minutes West, a distance of 462.88 feet to a point; thence measure North 24 degrees 09 minutes West, a distance of 353.0 feet to a point; thence measure North 18 degrees 28 minutes West, a distance of 629.38 feet to a point; thence measure North 18 degrees 09 minutes West, a distance of 525.42 feet to a point; thence measure North 89 degrees 05 minutes West, a distance of 1020.34 feet to a point; thence measure North 74 degrees 31 minutes 20 seconds West, a distance of 735.00 feet to a point; thence measure West, a distance of 268.31 feet to a point; thence measure North, a distance of 334.87 feet to a point; thence measure East, a distance of 1060.0 feet to a point; thence measure North, a distance of 320.13 feet to a point; thence measure East, a distance of 150.0 feet to a point; thence measure North, a distance of 15.0 feet to a point; thence measure North 89 degrees 38 minutes 36 seconds East, a distance of 131.07 feet to a point; thence measure South 79 degrees 18 minutes East, a distance of 179.91 feet to a point; thence measure South 62 degrees 15 minutes East, a distance of 825.79 feet to a point; thence measure South 49 degrees 49 minutes East, a distance of 180.59 feet to a point; thence measure South 31 degrees 52 minutes East, a distance of 854.35 feet to a point; thence measure South 32 degrees 44 minutes East, a distance of 321.29 feet to a point; thence measure South 29 degrees 31 minutes East, a distance of 452.82 feet to a point; thence measure South 45 degrees 00 minutes East, a distance of 531.56 feet to a point; thence measure South 41 degrees 05 minutes East, a distance of 717.78 feet to a point; thence measure South 37 degrees 19 minutes East, a distance of 472.57 feet to a point; thence measure South 13 degrees 12 minutes East, a distance of 151.54 feet back to the Point of Beginning, containing 101.24 acres.

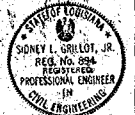


| | |
|---|-----------------|
| PREPARED BY: FONTCUBERTA SURVEYS, INC. | |
| DATE 10/07/98 | |
| SCALE 1"=100' | |
| PROJECT NO. 986972 | |
| DATE FSI-5416 | |
| SHEET 2 of 3 | |
| MARK | DESCRIPTION |
| | REVISION RECORD |

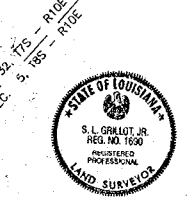
FINAL PLAT OF
MADISONVILLE ON THE LAKE
ADDITION 1 OF PHASE 1
 SITUATED IN
 SECTION 31 & 32, TOWNSHIP 7 SOUTH, RANGE 10 EAST
 & SECTION 5, TOWNSHIP 8 SOUTH, RANGE 10 EAST
 ST. TAMMANY PARISH, LOUISIANA

CERTIFIED CORRECT TO:
GRILMAR L.L.C.

SIDNEY L. GRILLOT, JR.
 CIVIL ENGINEER & LAND SURVEYOR
 1332 FILMORE AVENUE
 NEW ORLEANS, LA. 70122
 (504) 344-5598



CERTIFIED CORRECT
 C.E. & SURVEYOR
 LA. LIC. NO.: C.E. 884, L.S. 1690

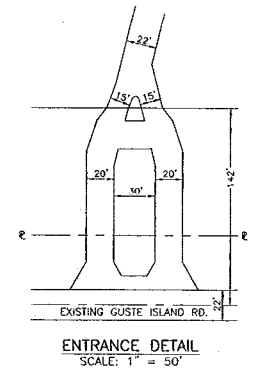
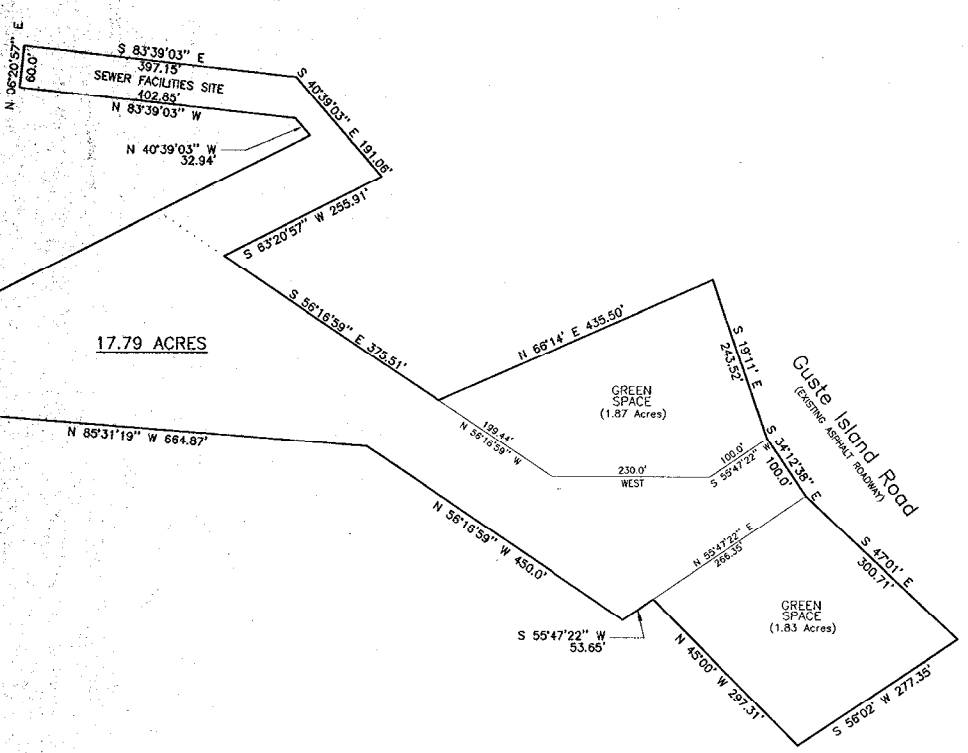
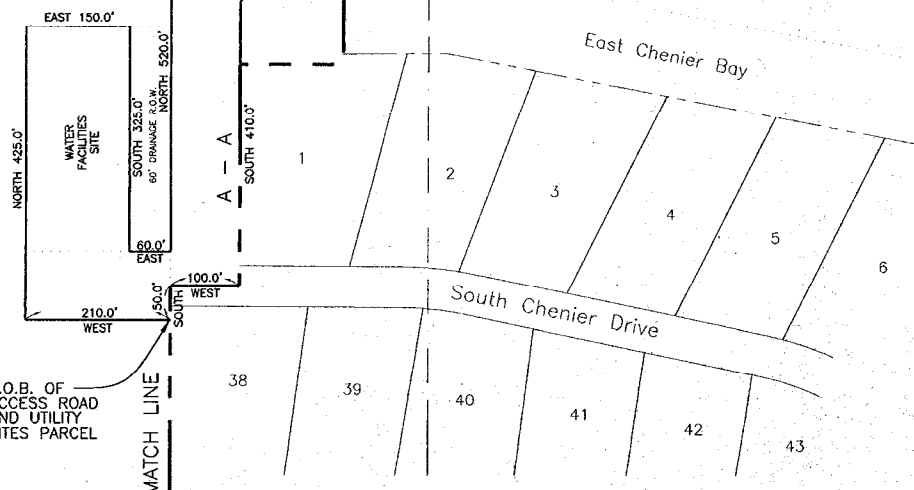


Map File 1705
 Date filed is 24-1999
 Jane C. Murphy, City Clerk
 (Sheet 2 of 3)

LEGAL DESCRIPTION
MADISONVILLE ON THE LAKE
ADDITION 1 OF PHASE 1
ACCESS ROAD AND UTILITY SITES PARCEL

One Certain Parcel of Land Situated in Sections 31 and 32, Township 7 South, Range 10 East, Parish of St. Tammany, State of Louisiana, and more fully described as follows:

Commencing at the Southeast Corner of Section 32, Township 7 South, Range 10 East, thence measure West, a distance of 725.37 feet to a point; thence continue West, a distance of 356.74 feet to a point; thence measure South, a distance of 320.0 feet to a point; thence measure North 82 degrees 34 minutes 33 seconds West, a distance of 211.28 feet to a point; thence measure North 70 degrees 44 minutes West, a distance of 198.72 feet to a point; thence measure North 27 degrees 37 minutes West, a distance of 525.02 feet to a point; thence measure North 45 degrees 09 minutes West, a distance of 550.16 feet to a point; thence measure North 35 degrees 57 minutes West, a distance of 469.88 feet to a point; thence measure North 22 degrees 00 minutes West, a distance of 555.0 feet to a point; thence measure North 30 degrees 28 minutes West, a distance of 629.98 feet to a point; thence measure North 53 degrees 00 minutes West, a distance of 574.47 feet to a point; thence measure North 80 degrees 35 minutes West, a distance of 1030.24 feet to a point; thence measure North 74 degrees 31 minutes 20 seconds West, a distance of 235.90 feet to a point; thence measure West, a distance of 265.31 feet to a point; thence measure North, a distance of 284.87 feet to the POINT OF BEGINNING. From the Point of Beginning measure West, a distance of 210.0 feet to a point; thence measure North, a distance of 425.0 feet to a point; thence measure East, a distance of 190.0 feet to a point; thence measure South, a distance of 325.0 feet to a point; thence measure East, a distance of 60.0 feet to a point; thence measure North, a distance of 520.0 feet to a point; thence measure North 65 degrees 20 minutes 37 seconds East, a distance of 2768.04 feet to a point; thence measure North 40 degrees 30 minutes 03 seconds West, a distance of 32.84 feet to a point; thence measure North 83 degrees 39 minutes 03 seconds West, a distance of 402.85 feet to a point; thence measure North 56 degrees 20 minutes 57 seconds East, a distance of 420.0 feet to a point; thence measure South 53 degrees 39 minutes 03 seconds East, a distance of 397.15 feet to a point; thence measure South 40 degrees 39 minutes 03 seconds East, a distance of 191.08 feet to a point; thence measure South 83 degrees 20 minutes 57 seconds West, a distance of 253.91 feet to a point; thence measure South 56 degrees 16 minutes 59 seconds East, a distance of 375.51 feet to a point; thence measure North 56 degrees 14 minutes 54 seconds East, a distance of 243.52 feet to a point; thence measure South 34 degrees 12 minutes 38 seconds East, a distance of 100.0 feet to a point; thence measure South 47 degrees 01 minute East, a distance of 300.71 feet to a point; thence measure South 56 degrees 02 minutes West, a distance of 277.35 feet to a point; thence measure North 45 degrees 08 minutes West, a distance of 1237.31 feet to a point; thence measure South 55 degrees 47 minutes 22 seconds West, a distance of 53.05 feet to a point; thence measure North 56 degrees 16 minutes 59 seconds East, a distance of 450.0 feet to a point; thence measure North 55 degrees 31 minutes 19 seconds West, a distance of 864.87 feet to a point; thence measure South 63 degrees 20 minutes 57 seconds West, a distance of 1900.0 feet to a point; thence measure South 32 degrees 20 minutes West, a distance of 178.0 feet to a point; thence measure South, a distance of 410.0 feet to a point; thence measure West, a distance of 100.0 feet to a point; thence measure South, a distance of 50.0 feet back to the Point of Beginning, containing 17.79 acres.



Map File 1705
Date filed: 5-24-1999
Jane L. Murphy, P.E. Clerk
(Sheet 3 of 3)

PREPARED BY:
FONTCUBERTA SURVEYS, INC.

| | |
|-------------|-----------------|
| DATE | 10/07/98 |
| S.G.S. | |
| CHECKED BY: | T.J.F. |
| SCALE: | 1"=100' |
| JOB NO. | 986972 |
| SHEET: | 3 of 3 |
| DRAWING NO. | FSI-5416 |
| MARK | |
| DESCRIPTION | REVISION RECORD |
| DATE | |
| BY | |

FINAL PLAT OF
MADISONVILLE ON THE LAKE
ADDITION 1 OF PHASE 1
SITUATED IN
SECTIONS 31 & 32, TOWNSHIP 7 SOUTH, RANGE 10 EAST
ST. TAMMANY PARISH, LOUISIANA

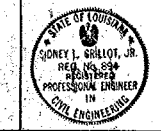
CERTIFIED CORRECT TO:
GRILMAR L.L.C.

SIDNEY L. GRILLOT, Jr.
CIVIL ENGINEER & LAND SURVEYOR
1332 FILMORE AVENUE
NEW ORLEANS, LA. 70122
(504) 394-5596

CERTIFIED CORRECT

S. E. & SURVEYOR

LA. REG. NO. C.E. 694, L.S. 1690



MADISONVILLE ON THE LAKE
ACCESS ROAD AND UTILITY SITES
PARCEL

THIS PLAN IS CERTIFIED TO CONFORM TO THE STATE OF LOUISIANA R.S. 33-5051 AND THE LAWS AND ORDINANCES OF ST. TAMMANY PARISH, AND CERTIFIED TO BE CORRECT AND IN ACCORDANCE WITH A PHYSICAL SURVEY MADE ON THE GROUND UNDER THE SUPERVISION OF THE UNDERSIGNED.